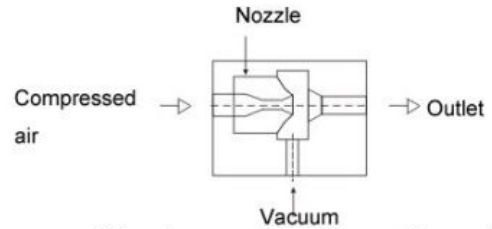
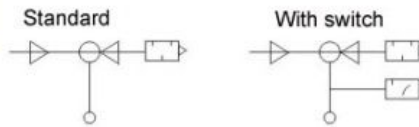




Explanation



When the compressed air press the nozzle. It discharges at a high speed and produces the side attraction effect through diffusion.



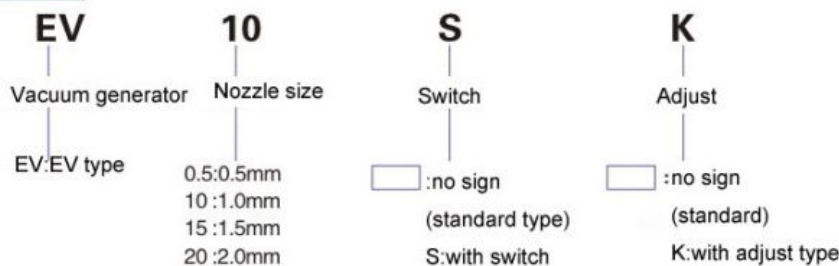
Specification

Item	Model	EV-05	EV-10	EV-15	EV-20
Fluid		Air			
Temperature		0° ~ 60°			
Lubrication		Non-required			
Pressure range		0.1~1.6 (1.0~6.0kgf/cm ²)			
Spray mouth diameter		Φ0.5	Φ1.0	Φ1.5	Φ2.0
Attai a vacuum		-91.8Kpa(-690mmHg)			

Equipment

Item	Model	-S Fixed type	-SK Adjustable type
Rated pressure range		-39.9 (-300mmHg)	-20.0~-53.2 (-150~-400mmHg)
Setting value		-39.9 (-300mmHg)	-46.6 (-350mmHg)
Repeatability(KPa)		± 5.3 (± -40mmHg)	
Hysteresis		4.0~13.3(30~100mmHg)	
Power specification		AC125V:5A AC250V:3V	
Temperature range		0° ~ 60°	

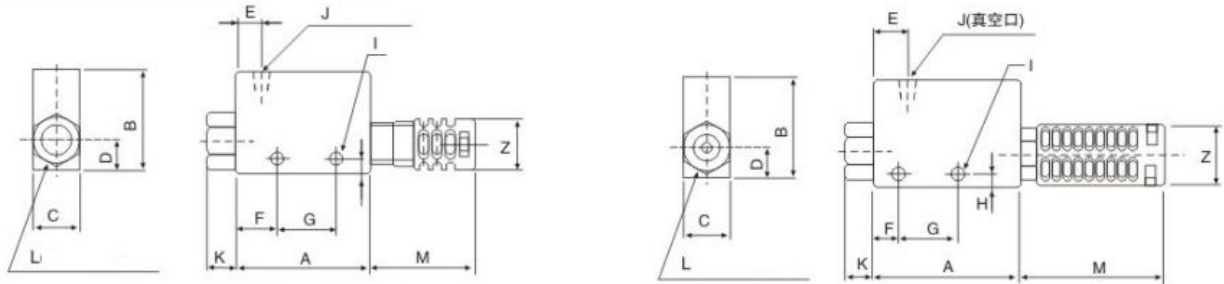
Ordering code



Vacuum performance

Item Model	Spray mouth diameter(mm)	Displacement	Attain a vacuum -KPa (-mmHg)	The air consumption	Air pressure -MPa (Kgf/cm ²)
EV-05HS	0.5	6	86.7(650)	13	0.5(5)
EV-10HS	1.0	27	91.8(690)	44	0.5(5)
EV-15HS	1.5	63	91.8(690)	100	0.5(5)
EV-20HS	2.0	110	91.8(690)	180	0.5(5)

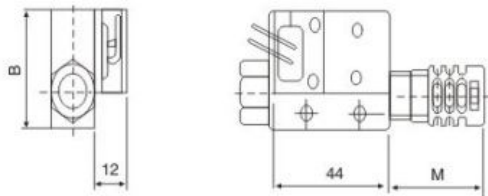
Dimensions



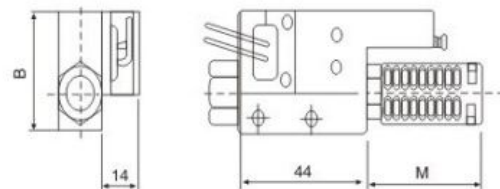
Model	A	B	C	D	E	F	G	H	I	J	K	L	M	N	Silencer
EV-05	45	33	16	10	8	14	20	4.5	2-Φ4.2	R1/8	10	R1/8	36	Φ16	R1/8
EV-10	45	33	16	10	8	14	20	4.5	2-Φ4.2	R1/8	10	R1/8	36	Φ16	R1/8
EV-15	63	35	20	11	10	20	25	5	2-Φ4.5	R1/4	15	R1/4	45.5	Φ20	R1/4
EV-20	85	40	30	15	13	28	32	7	2-Φ6	R3/8	20	R1/4	60.5	Φ30	R1/2

Equipment

-S type



-SK type



Item Model	EV-05	EV-10	EV-15	EV-20
M	28	28	52	55
B	33	33	35	40